



Global World Ltd.

An International Trading Company



info@globalworld.com.bd
globalworldlimited@gmail.com



www.globalworld.com.bd



+88 01747996850
+88 01640 900005



Cha-90/A, BTI Premier Plaza, Level-3, NO-26, Pragati Sharani,
Uttar Badda, Gulshan, Dhaka-1212, Dhaka Division, Bangladesh.

Table of Contents

01.	Introduction of Global World Ltd.	03
02.	Message from Chairman	04
03.	Message from Managing Director	05
04.	Message from Director.....	06
05.	We concentrate on the following commodities	07
06.	Why Us?	07
07.	Quality.....	08
08.	Customer Satisfaction	08
09.	Our Vendor Base	08
10.	Our Associates.....	08
11.	Some Pictures of Office	09
12.	Export Items	10
13.	Organic Products	17
14.	Import Items	20
15.	Global Construction	23
16.	List Of Tools And Equipment (For Erection And Construction)	24
17.	Our Organization Structure	25
18.	Our Management Team	25
19.	Our People	25
20.	Revenue and Sectoral Breakdown for last 5 years	26
21.	Project.....	27
22.	Drump Truck	30
23.	DIGI Trak-F5	31
24.	HDD Machine	32
25.	Super shop	34
26.	Tenders	34
27.	Solar Street Light.....	35
28.	Company Information	36
29.	Operational Staff	37
30.	Office Staff	38
31.	Trade License	39
32.	Certificate of Incorporation	41
33.	Certificate of e-VAT	42
34.	Certificate of e-TIN	43
35.	Certificate of Export Promotion Bureau	44
36.	Certificate of Membership	45
37.	Export Registration Certificate	46
38.	Import Registration Certificate	48

Introduction of Global World Ltd.

Global World Ltd. is the one of the best company in Dhaka, Bangladesh. We were established as a Limited Company in 2011 and engaged Export-Import, Trading, Supplying, Real Estate, Marketing, Tourism etc. Business.

Global World Ltd. is a leading Trading House at Dhaka, Bangladesh. We import goods on customer's demand. We export Natural Rubber, Leather, Leather goods, Jute, Wooden Furniture, Garments stock lot, Fabrics, Fish, Potato, Vegetable, Garments Accessories, Tea, Rice Bran oil, Aromatic Rice etc.

We also import Baby Diaper, Tissue Paper, Soap Noodles, Foil Paper, various food items like: Coffee, Skim Milk Powder, Macaroni, Noodles etc.

Global World Ltd. has expert advisor and personal that are experienced Engineers, efficient Technicians, professional commercial department and challenging decision makers with Portfolio Management. We have strong foundation on export business with enough stocks, lot of sources for supplying construction materials, and Tools and Equipment for the erection work of Pre-Engineering Steel Buildings and Light, Medium & Heavy duty Tower. Our Technicians are experienced for Erection Pre-Engineering Steel Buildings.

We have experienced capable for Turn-key basis project (Equipment Transportation, Installation, Alignment & Commissioning) of different size Tower, multistoried Building, Pre-Engineering Steel Buildings, Washing Plant, ETP (Water Treatment Plant), by qualified Engineer and Technicians.

Global World Ltd. is a customary oriented service organization and focused in quality work. Our vision is to maintain standard and excellence in service. Our team emphasizes the requirement of customer and giving high priority to customer's concepts.

We always assure a very high quality of workmanship and in the same time maintaining the time schedule strictly.

Message from Chairman



The dawn of the new millennium brings with it a new challenge with a brighter economic outlook to the entire Asian region. We see more opportunities ahead us we enter into this new millennium. We are determined to continue to be a significant player in the construction industry. Along with opportunities we see challenges and competition that will make us strive harder in terms of our effort, efficiency and quality.

We are now ready for aggressive growth fed by it's a new challenge with a brighter past experience and strengths. We believe construction is the foundation of the entire economy which opens the door of numerous opportunities. We expect to gain a significant share of construction projects in the next few years. We, at Global World Ltd., are proud to be playing an important role in the revival of the Country's development.

Mrs Ashia Siddique
Chairman
Global World Ltd.

Message from Managing Director



We take this opportunity to thank our acclaimed customers, whose continued patronage and confidence in our products inspires us to extend the best of services and enables us to provide value for their money. We are committed to total customer satisfaction by identifying their specific needs, translating them into quality products and providing dependable after-sales-services. We plan to achieve this goal through our strength, the employees and seek their continuous involvement in achieving the company's objectives.

On behalf of the management team, I would like to maintain effective quality management strategies with corporate social responsibility policy, innovation development plans as well as prioritize teamwork and workforce collaboration to further achievement of our organization as nations leading Energy Company. I would like to thank the management team, my colleagues which have worked together to support Global World Ltd. No matter how long the time has passed, all your smiles and commitment still remain the same. I do hope that the great fortitude, sacrifice and innovative thinking of every GWL staffs will ensure the prosperity and success of Global World Ltd.

Md. Sakhawat Hossain
Managing Director
Global World Ltd.

Message from Director



Global World Ltd. passion to match the right people to the right job has helped us to amass over a decade of successful stories in the human resource business.

Each client and candidate is like an extended family member to us. And like family, we understand and anticipate your needs, matching the right candidates to the right clients.

Our professionalism, coupled with a strong personal touch enhances the probability of success at every step. Our goal is to create a long-lasting client-candidate relationship, which will translate into long term winning strategies and exponential growth for both parties.

But we know that finding a candidate with the right skill set is not the be all and end all. At Global World Ltd., we understand that overall chemistry between the candidate and the existing management is paramount in ensuring a good match.

Consultants are empowered with the final authority and flexibility to deal with each client's requirements. In our commitment to finding the best match, we customize our approach, systems and processes not only from client to client but also from assignment, all the while keeping underlying principles common.

To ensure success, we believe in hiring people with the right values and specialized experience. If you wish to find out more or engage our manpower solution, please do not hesitate to contact us. We look forward to have you as a part of the Global World Ltd. family.

Md. Golam Kibria
Director
Global World Ltd.

We concentrate on the following commodities:

- | | |
|------------------------------|----------------------------|
| ☒ Latex Rubber | ☒ Wood Furniture |
| ☒ RSS Rubber | ☒ Garments and Accessories |
| ☒ Crest Leather | ☒ Home textile |
| ☒ Cotton Fabrics | ☒ Jute and Products |
| ☒ Bangladesh Standard Rubber | ☒ Caps |
| ☒ Finished Leather | ☒ Spices |
| ☒ Leather Goods | ☒ Seeds and oil |

The Products supplied by us are procured/contractly manufactured from the reliable source of the market that make us assure their high quality. Today, we are a respected name in the field of exports and multiple Bangladesh commodities. In export sectors our products meets international standards with competitive prices and we have the capacity for bulk quantities supplies. We are interested in establisihing long time business relationship with overseas companies.

Global World Ltd. assures for "the Best Quality, Competitive Price, Regular Supply & Timely Delivery."

Why Us?

- | | |
|--|--------------------------------------|
| ➡ Quick response within 24 hrs | ➡ Capable for bulk quantity supplies |
| ➡ To provide best competitive market price | ➡ Best quality |
| ➡ Transparent business dealing | ➡ Team of professionals |
| ➡ Timely delivery | ➡ Complete satisfaction guaranteed |

Quality:

We are undergoing regular inspections in various aspects to maintain the best international standards to achieve the assured "high quality". We choose those products that satisfies high quality parameter to our clients. We have very well establised platform, to catering for demands in domestic as well as international market.

Customer Satisfaction:

The prime focus of the company is to deliver the products that meets the customers satisfaction in an optimum manner. Product delivery, with promised time frame for even bulk orders makes our client have confidence with us and thus lead a good relationship with them . With the help of extensive distribution network and efficient facilities, we have formed the reputation of meeting the deadlines. We further make sure that our clients are benefited with various facilities such as best quality products, comfortable payment modes & cost effective price.

Our Vendor Base:

Being a Merchant Exporter, we have built cozy relations with various reputed and trustworthy manufactures. We lay emphasis on the manufacturer's past track record, financial stability and goodwill in the maket, before choosing them. They also, faithfully follow the norms of quality specified by us, at every level of their work. Every single product from us meets the requirements of our customer and we make sure deliver in time, in consideration of client satisfaction.

Our Associates:

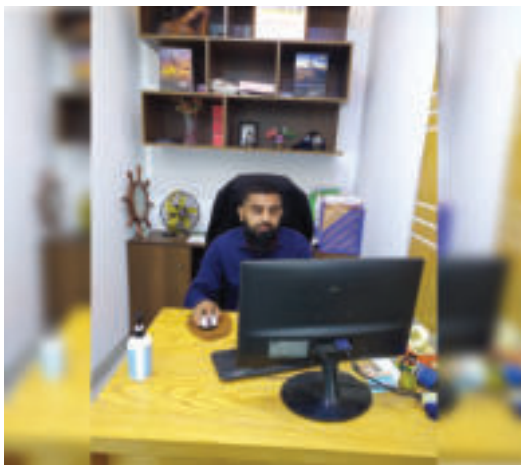
We are supported with highly professional connections in various cuntries like:

*Turkey	*Italy	*Moldova	*Ukraine	*German
*Netherland	*Australia	*Malaysia	*Japan	* USA

Some Pictures of Office

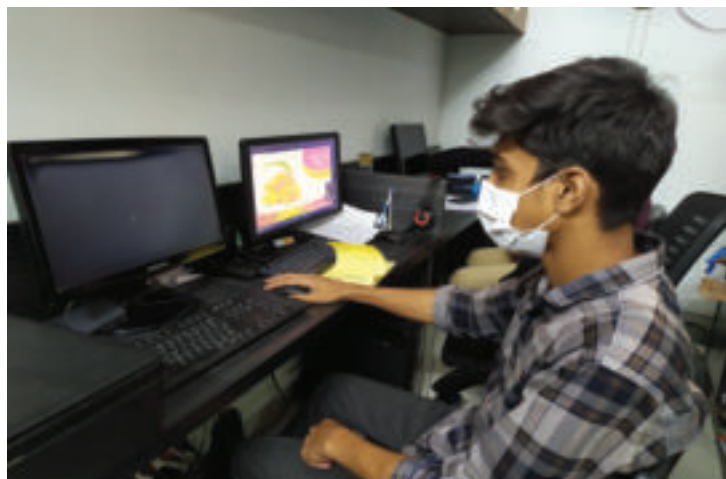


Our Managing Director



General Manager

Office Staff's





Office Building

Our Office Environment



Export Items

Latex Rubber



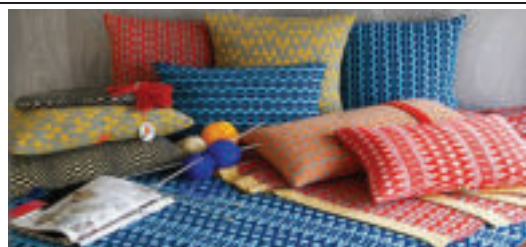
A natural latex emulsion that will air dry rapidly and can be used to make moulds in which wax, plaster or resin parts can be cast.

Bangladesh Standard Natural Rubber (BSNR)



Bangladesh Standard Natural rubber (BSNR) is obtained from the tree *Hevea Brasiliensis*. In Bangladesh there are some rubber gardens in Sylhet, Chittagong, Chittagong Hill Tracts, Modhupur zones and some other areas under Bangladesh Forest Industries Development Corporation.

Home Textile



We are an experienced and efficient producer and exporter of Bed Sheets with pillow covers for single and double bed. We sell bed sheets in all over the world.

RSS Rubber



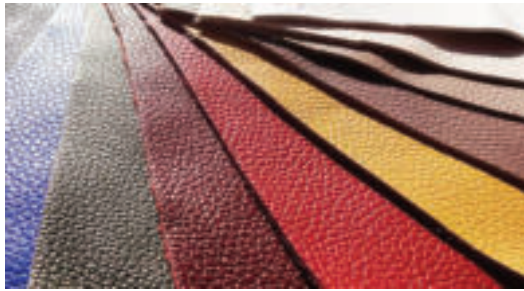
Ribbed Smoked Sheet Rubber is commonly known as RSS. It is made directly from latex which is treated and then made to coagulate. The coagulated latex sheets are then air dried or smoked in ovens. The smoked sheets are visually graded on the basis of certain parameters and then packed in bales. Please see the table below for specifications of the various RSS grades.

Handi Craft



The Handicrafts manufacturers & exporters had formed a national association in 1979 under the name and style of **Bangladesh Handicrafts Manufacturers And Exporters Association. In short Banglacraft.** The Association was mainly formed with the Manufacturers, Exporters Traders, Producers, Designers, Promoters and Suppliers of handicrafts items throughout the country.

Cotton



This leather has a PIGMENTED COLOUR over the surface and is finished with a CLEAR SEALER. FINISHED LEATHER is by far the most serviceable and durable of the 3 leather types.

Crest Leather



The hallmark of Crest Leather is the Our Fabric buying team have assembled an extensive selection of Dressmaking fabrics to suit your needs, such as 100% Cotton, Cotton Poplin, Scuba, Gingham, Linen, Velvet, Dress Lining & more!

Bomber Jackets



A bomber jacket is a piece of outerwear that generally follows these rules:

1. A wraparound collar,
2. Tight wrist cuffs,
3. A tight waist usually achieved through an elasticated band,
4. Bulky and insulated arms,
5. Zipper closure

Historically, as the name suggests, they were used by aviators in various Air Forces predominately the U.S.

Leather Goods



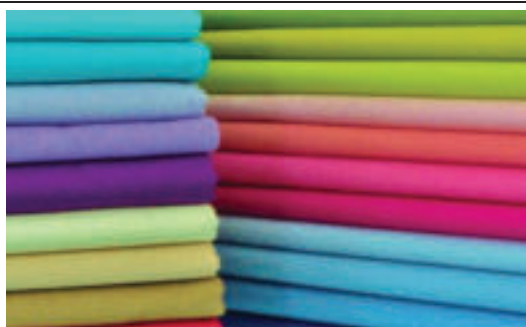
We have many kind of Leather Goods. Such as 1. Belt 2. Wallet 3. Portfolio case 4. Pet accessories 5. Mobile case 6. Ladies Handbag 7. Watch Bands 8. Men & Woment Accessories 9. Footwear 10. Camera and Guitar straps And much more.

Weekender Bag



Get out of town for a few days with a swanky duffel tote that's handcrafted and double stitched for durability. The Iblue Overnight Weekender Bag is made of canvas material and thick, genuine leather trim with trendy buckles that make for a professional look. The Iblue measures 21 x 9 x 14 inches, so it falls within carry-on limits of most airlines. The interior offers a fully-lined main compartment, pockets for gadgets and even pen holders. There's also a quick-access exterior pocket, a shoulder strap, grab handles and scuff guards along the bottom, so it can comfortably rest on surfaces without getting dirty.

Cotton Fabrics



Assembled an extensive selection of Dressmaking fabrics to suit your needs, such as 100% Cotton, Cotton Poplin, Scuba, Gingham, Linen, Velvet, Dress Lining & more!

Garments Accessories



Button, Rivet, Stopper, Interlining, Lining, Metal, Badge, Elastic, Zipper, Shoulder Pad, All types of Label such as main label, care label, size label etc. Hook and Loop, Twill Tape, Velcro Tape, Lace.

Cap



We manufacture various types of caps and hats, like Peak Caps, Berets caps that are made of pure wool.

Elastic



Elastic is highly used in our every life Such as in 1. Belt 2. Wallet 3. Portfolio case 4. Pet accessories 5. Mobile case 6. Ladies Handbag 7. Watch Bands 8. Men & Woment Accessories 9. Footwear 10. Camera and Guitar straps And much more.

Jute Product



It has a golden history. Bangladesh was the leading jute producer country. We export like ☐ Jute Bags ☐ Jute Handicrafts ☐ Jute Textile ☐ Jute Apparel ☐ Jute Furnishings ☐ Industrial Jute Goods.

Dry Fish



Good quality full dried sea foods items which are processed hygienically safe and naturally sun dried.

Shrimp Fish



The Bangladesh shrimp industry is largely shrimp export from Bangladesh geared for export, and more than 80% of the total national shrimp produced ends up on foreign markets. Over two thirds of shrimp exports are imported by USA the EU, notably by Belgium, German, The UK and The Netherlands. Japan, Russia and Saudia Arabia are the position of next.

Vagitable



We export all kind of vegetable like Cabbage, Cauliflower, Kohlrabi, Chinese cabbage, Petsai, Saishin, Mustard green, Turnip, String bean, French bean, Vegetable soybean, Sweet gourd, Bottle gourd, Palwal, Chilli, Tomato etc.

Wood Furniture



We sell top name brand furniture such as Woodhaven, RiversEdge, ASHLEY and more.

Rice Bran Oil



Pure Gold Rice Bran Oil is a 100% cholesterol free cooking oil which has several health benefits. It contains vitamin E, unique micro nutrients and natural anti-oxidants that are not found in other cooking oils. Consequently, Pure Gold Rice Bran Oil is good for heart, skin, nervous system, immune system, fights cancer, hormonal health.

Tea



Bangladesh is an important tea producing country. Its tea industry dates back to British rule, when the East India Company initiated the tea trade in Chittagong in 1840. Today, the country has 172 commercial tea estates, including many of the world's largest working plantations. The industry accounts for 3% of global tea production, and employs more than 4 million people.

Ceramic



The growth potential of both domestic and export market indicate that ceramic industry has every potential to become a big foreign exchange earner for the country in the near future. Traditionally known for jute and tea exports, Bangladesh entry into ceramic export market is not that old. But the industry has witnessed a rapid growth since 1991.

Aromatic Rice



Aromatic Rice is rice with natural chemical compound which gives it a unique scent. Numerous varieties of rice are aromatic. It can be used just like conventional rice for cooking but adds a new dimension of flavor and aroma to meals.

☒ Organic Products:

Organic Vegetable



Organic agriculture is about a way of farming that pays close attention to nature. It means fewer chemicals on the land such as artificial fertilisers, which can pollute waterways. It means more wildlife and biodiversity, the absence of veterinary medicines such as antibiotics in rearing livestock and the avoidance of genetic modification. Organic farming can also offer benefits for animal welfare, as animals are required to be kept in more natural, free conditions.

Organic Fruits



Organic food has become very popular. But navigating the maze of organic food labels, benefits, and claims can be confusing. Organic food is really better for our mental and physical health.

Organic Oil



Organic oils are produced in remarkable diversity by plants, animals, and other organisms through natural metabolic processes. Lipid is the scientific term for the fatty acids, steroids and similar chemicals often found in the oils produced by living things, while oil refers to an overall mixture of chemicals.

Organic Fish



Among all organic foods, organic fish is an important one. As Bangladesh is a land of rivers, various kinds of fishes are available. So we collect those natural fishes and process them naturally. In recent years the demand of organic fish is increasing, so we are ready to provide full support.

Honey



Since ancient times, honey has been used as both a food and a medicine.

It's very high in beneficial plant compounds and offers several health benefits. Honey is particularly healthy when used instead of refined sugar, which is 100% empty calories.

Sesame



Sesame seeds add a nutty taste and a delicate, almost invisible, crunch to many Asian dishes. They are also the main ingredients in tahini (sesame seed paste) and the wonderful Middle Eastern sweet called halvah. They are available throughout the year.

Nigella Sativa



Also known as black cumin, nigella or by its scientific name *Nigella sativa*, kalonji belongs to the buttercup family of flowering plants.

It grows up to 12 inches (30 cm) tall and produces a fruit with seeds that are used as a flavorful spice in many cuisines.

In addition to its culinary use, kalonji is known for its medicinal properties.

In fact, its use can be traced back several centuries as a natural remedy for everything from bronchitis to diarrhea.

Potato



Potatoes are edible tubers, available worldwide and all year long. They are relatively cheap to grow, rich in nutrients, and they can make a delicious treat.

The humble potato has fallen in popularity in recent years, due to the interest in low-carb foods.

However, the fiber, vitamins, minerals, and phytochemicals it provides can help ward off disease and benefit human health.

Shrimp Fish



The health benefits of shrimp include improved bone and brain health, weight management, and a lowered risk of cardiovascular disease. Shrimp has anti-inflammatory, cancer preventative, and anti-aging properties that help to reduce the risk of various health ailments. It helps in treating age-related macular degeneration and relieving eye fatigue. It also provides relief from menstrual pain. Shrimp is a high-benefit option for increasing your overall health in a truly delicious way.

Nigella Sativa Oil



For over two thousand years, black seed oil has been traditionally used in herbal medicine throughout various cultures all over the world as a natural remedy for many diseases and ailments, as well as to improve general health.

Black Seed (*Nigella Sativa*) grows throughout bangdesh, Arabia, and Europe to about 16-24 inches in height and has white flowers when in bloom. The deep black, sharp-cornered rectangular seeds (no longer than 3 mm) are the part of the plant that is used.

Crab



Crab is more than a popular item on a seafood menu; it also offers us a number of impressive health benefits, such as its ability to increase cognition, protect the heart, reduce inflammation, strengthen bones, boost the immune system, stimulate circulation, and detoxify the body.

Organic Agriculture



Organic food contributes to better health through reduced pesticide exposure for all and increased nutritional quality. Organic food can feed us and keep us healthy without producing the toxic effects of chemical agriculture.

Not only is the production of organic food better for human health and the environment than conventional production, emerging science reveals what organic advocates have been saying for a long time-in addition to lacking the toxic residues of conventional foods, organic food is more nutritious.

Import Items

Baby Diaper



Diapers are among the most important baby accessories. Understanding the differences between the various types of diapers will help you choose the best ones for your baby. Ildiz Baby Diaper Textile Backsheet, Excellent Absorption and Rewet Rates, Anatomic Shape, Cotton like Texture, Super Absorbent Inner Layer, Thinner Structure, Strong Grip.

Soap Noodles



Soap Noodles are made from vegetable oils, such as palm oil, coconut oil or olive oil, and/or animal fats (tallow). These are 'saponified', usually using sodium hydroxide, to form a salt of the fatty acids. Soap Noodles constitute the very basic form of soap.

Gunbak Goffee



GUNBAK's Turkish original coffee is especially prepared in a "coffeepot" for medium sweet coffee, and one teaspoonful on sugar per cup. Place the coffeepot on a low heat then add one teaspoonful of GUNBAK's Turkish original coffee. Heat it slowly stirring gently until the sugar dissolves. When the coffee starts to froth up remove from heat pour a little of the heat till it rises once more - Without, letting it boil- and serve. But be careful not to stir after serving or you will disturb the sediment and the coffee will taste gritty.

Foil Paper



Foil Paper will add brilliance and dimension to all of your arts, crafts, and party decorations. It is more like aluminum foil crossed with a paper. It has a nice thick quality to it, but doesn't wrinkle as easily as foil.

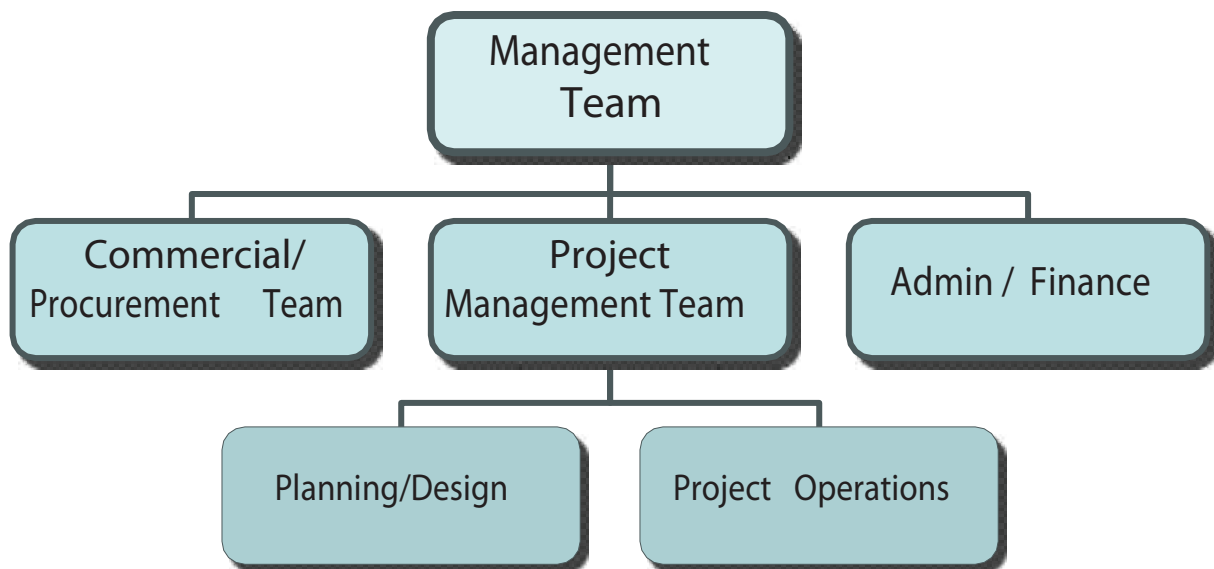
Tissue	Skim Milk Powder
 <p>Heavy Weight Tissue Paper comes with our 100% Satisfaction Guarantee! Matching Tissue Paper for Horse Shoe Gift Packaging gift bags - With A Theme For Every Horseman Or Horse Lover.</p>	
Macaroni	<p>Non fat dry milk is the product resulting from the removal of fat and water from milk and contains the lactose, milk proteins and milk minerals in the same relative proportions as in the fresh milk from which it was made.</p>
 <p>Macaroni is a variety of dry pasta traditionally shaped and produced in various shapes and sizes. Made with durum wheat.</p>	

Global Constraction

LIST OF TOOLS AND EQUIPMENT (FOR ERECTION AND CONSTRUCTION)

SL NO	NAME OF THE EQUIPEMENT	QUANTITY
1	Portable hand winch (1.5 and 1ton capacity)	3 Nos
2	Level Meter	2 Nos
3	Sprit Label	10 Nos
4	Compass	8 No
5	GPS	2 Nos
6	BER Meter	1 Nos
7	Laptop	4 Nos
8	Digi Trak F-5	3 Nos
9	Drump Truck	5 Nos
10	HDD Machine	4 Nos
11	Multi Meter	Nos
12	Pulley Belt (1.5 and 1ton capacity)	Coil
13	Nylon Rope (12 mm to 18 mm dia)	Nos
14	Safty Belt	Nos
15	Safety Hamlet	Nos
16	Shackle(different Sizes)	Nos
17	Wire Grip	Nos
18	Guy Wire Tension Clamp	Nos
19	Box Wire Grip	Sets
20	Pipe Wrench Set	Sets
21	Ratchet Wrench -13 No	Nos
22	Ratchet Wrench -17 No	Nos
23	Ratchet Wrench -19 No	Nos
24	Ratchet Wrench -24 No	Nos
25	Ratchet Wrench -30	Nos
26	Ratchet Wrench -36	Nos
27	Slide Wrench	Lot
28	Ring Wrench (6 mm to 46 mm)	Lot

Our Organization Structure:



Our Management Team:

The business is driven by our 2 working directors; collectively they accumulated more than 45 years of work experience in the building industry. They are involved in the business development, procurement, project management and administration of the company.

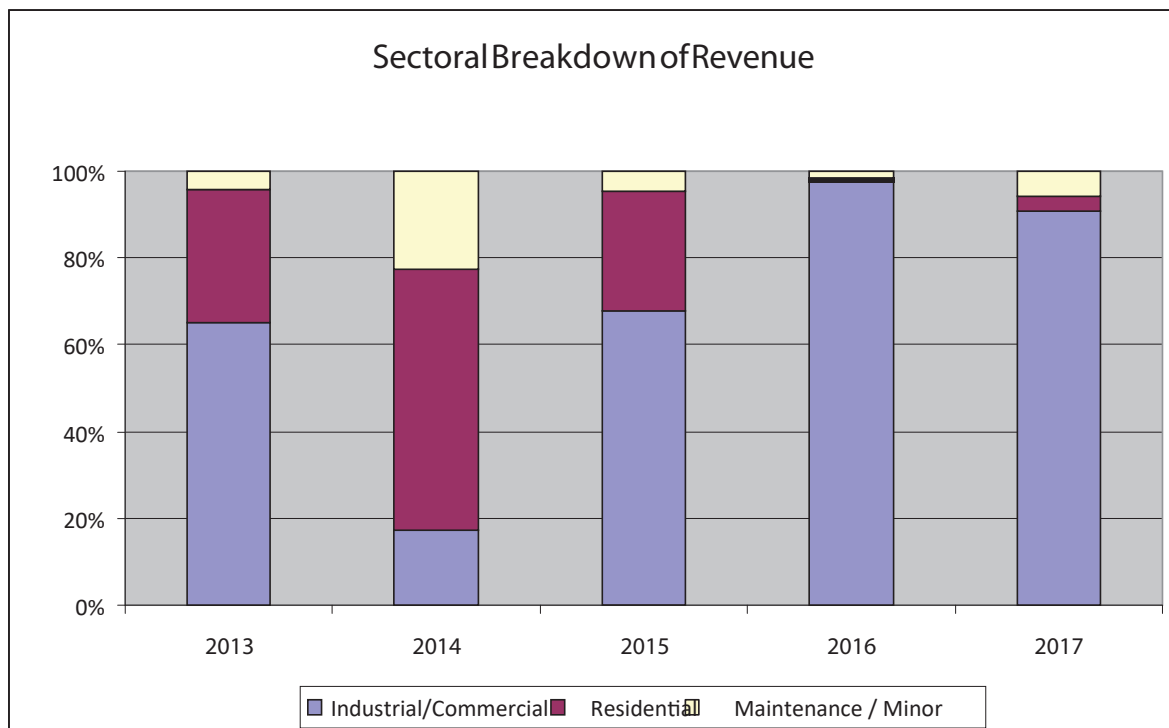
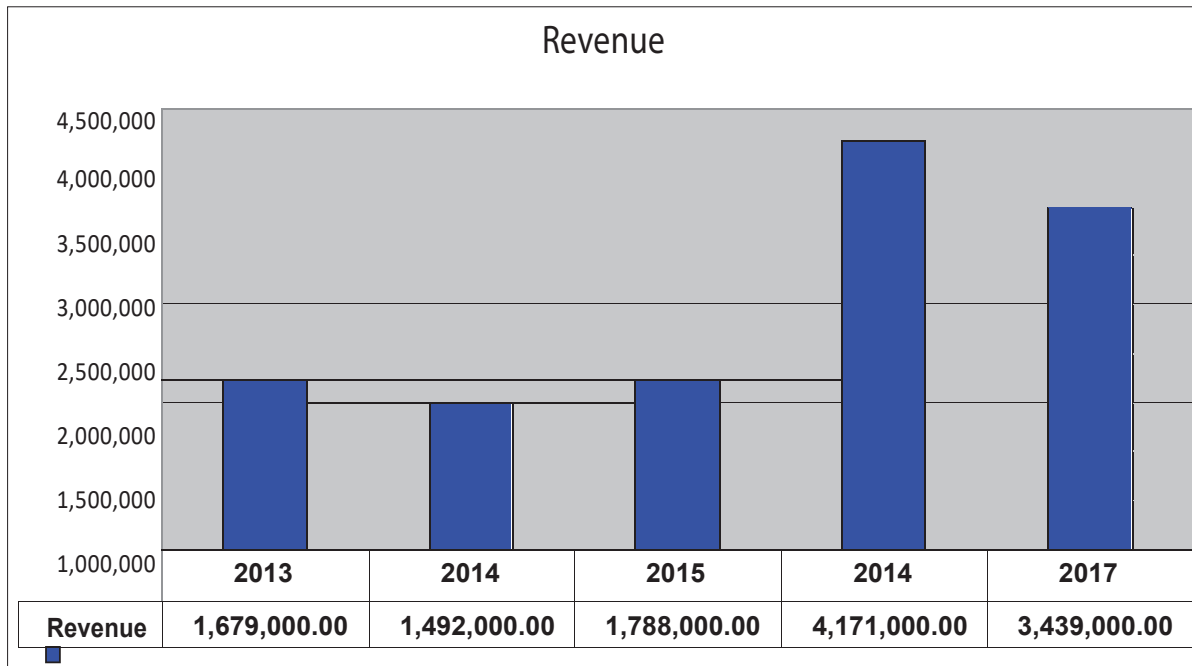
The management team proactively gathers feedback, identifies changes in business environment, reviews work processes and communicates key learning points and company policy to all staff at regular meetings.

Our People:

Our people are crucial in the delivery of our services and solution to our clients. In order to ensure that everyone is equipped with the right skill, knowledge and attitude, a comprehensive training programme is put in place to constantly upgrade our people in technical and management skills.

We believe firmly in providing the right training, accredited certification and practical knowledge for our people, in order for them to execute their duties and responsibilities confidently. Our aim is to stay relevant to the ever-changing market place and client's requirement.

Revenue and Sectoral Breakdown for last 5 years



Project



Work Scope:

Main Contractor for the project. There are a total of 3 building blocks and the works included:

- ☒ Demolition works
- ☒ Micro-Piling works
- ☒ Structural steel works
- ☒ New canopy including feature wall
- ☒ Architectural works
- ☒ External works including drains, car parks and roads

Mechanical & Electrical Works

Addition & Alteration Works with Extension to Existing Single Storey Factory / Office with Mezzanine Floors

Contract Duration: 4 May 2012 to 1 Nov 2020

Project Contract Value:
\$1.5 million



Work Scope:

Main Contractor for the project. Works executed includes:

- ☒ General Site levelling
- ☒ Micro-Piling
- ☒ New Drainage
- ☒ RC walled Tanks for waste treatment
- ☒ Structural Steel works
- ☒ Electrical works

Include coordination with specialist sub-contractor to make provisions for piping and equipment installation and commissioning.

New MBR Validation Plant for Water Reclamation Plant

Contract Duration:
23 April 2011 to 13 July 2019

Project Contract Value:

\$200,000.00

Construction Equipment

Drump Truck



We rent contractually our durm trucks and Excavator like project basis or daily basis.

Ten wheelers 25/18 tiper

Capacity 700 CFT / 30 Ton

Excavator D-5 (CAT)

DIGI Trak -F5



Falcon technology represents a significant advancement in helping crews overcome one of the biggest obstacles to completing their underground drilling projects: active interference. DigiTrak Falcon F5 provides crews with Falcon technology alongside all the advanced features of the classic F5 system, like DataLog, fluid pressure monitoring, and dual frequency bands.

- ☒ Falcon frequency optimizer analyzes and overcomes active interference at different jobsites.
- ☒ Infrared pairing of receiver and transmitter.
- ☒ 0.1% precision pitch for completing critical grade bores.
- ☒ Max Mode noise filtering boosts fringe data and stabilizes depth readings.
- ☒ Supports DataLog, Log-While-Drilling, and Target Steering features.
- ☒ Compatible with DigiTrak Aurora touch screen display.
- ☒ Fluid pressure transmitter.
- ☒ 24 transmitter roll position.

HDD Machine



ZT-18RP: A Compact, Reliable, Powerful & Easy to use HDD Machine

The underground construction industry in India is going through a phase of rapid growth aided by the influx of latest technologies. It gives me immense pride in stating that Rosewood Projects Pvt Ltd is playing a key role in the underground construction revolution that is taking place in India. It has always been our philosophy to offer more than just a good product. Our range of innovative products and excellent services has earned us the trust of thousands of satisfied customers.

Our company was founded based on certain key principles namely- Responsiveness, Reliability, Honesty and Giving Customers the Best Product for their underground projects challenges. These core principles have been guiding us in each and every one of our decisions, since the time we set up our trenchless business in 2007. Our emphasis has been on providing the best machine. One of our key areas of strength is our warehouse of machines and parts, which helps us to cater to the needs of our customers promptly, even under short notice.

Other Services

Supershop



SuperShop was the first, and is currently the fastest growing multi-partner loyalty programme for regular customers in Dhaka, Bangladesh . It was created by retail and service chains that are popular throughout the country to reward their regular customers with loyalty points. Besides, we are going to open a new branch for supershop in Florida, USA.

We offer different kinds of Agro Food Items, Packaged food items, Green vegetables, Fishes, Meats, Drinks, Fast foods etc.

Tenders



We participate in Local & International Tenders. We act as Local Agent on behalf of International Trading Company. Recently we are working as a Local Agent of **BARNOW ARMS** and **BARAK, Turkey**. We are working on different local tenders with different Government organizations as well as Non-government Organizations.

Solar Street Light



Solar street lights are raised light sources which are powered by photovoltaic panels generally mounted on the lighting structure or integrated in the pole itself. The photovoltaic panels charge a rechargeable battery, which powers a fluorescent or LED lamp during the night.

ট্রেড লাইসেন্স (TRADE LICENCE)

No : 03-065128

নবায়ন কার্যকারিতার মেয়াদ ২০২০-২০২১ খ্রিঃ

১। জন্ম তারিখ : ২৮-০৭-২০২০

২। লাইসেন্স বই নম্বর : ০৬-০৬৫১২৮

চালান বই নম্বর ০০

৩। টাকার পরিমাণ : লাইসেন্স/ নবায়ন ফি = ৪৫০০/-

সাইনবোর্ড কর = ৯৫০/-

সারচার্জ =

মোট টাকা (অংকে) = ৫,৪৫০/-

মোট টাকা (কথায়) =

পাঁচ হাজার চার শত মটি টাকা মাত্র

ক্রম নম্বর

তারিখ

ব্যাংক ক্যাশিয়ারের স্বাক্ষর ও সীল

গুলশান নিউ নর্থ সার্কেল শাখা, ঢাকা।

ব্যাংক কর্মকর্তার স্বাক্ষর ও সীল

নবায়ন কার্যকারিতার মেয়াদ ২০২১-২০২২ খ্রিঃ

১। জন্ম তারিখ

২। লাইসেন্স বই নম্বর

চালান বই নম্বর

৩। টাকার পরিমাণ : লাইসেন্স/ নবায়ন ফি = ৪৩০০/-

সাইনবোর্ড কর = ৯৫০/-

সারচার্জ =

মোট টাকা (অংকে) = ৫,২৫০/-

মোট টাকা (কথায়) =

পাঁচ হাজার ত্রিশ মটি টাকা মাত্র

ক্রম নম্বর

তারিখ

ব্যাংক ক্যাশিয়ারের স্বাক্ষর ও সীল

গুলশান নিউ নর্থ সার্কেল শাখা, ঢাকা।

ব্যাংক কর্মকর্তার স্বাক্ষর ও সীল

নবায়ন কার্যকারিতার মেয়াদ ২০২২-২০২৩ খ্রিঃ

১। জন্ম তারিখ

২। লাইসেন্স বই নম্বর

চালান বই নম্বর

৩। টাকার পরিমাণ : লাইসেন্স/ নবায়ন ফি =

সাইনবোর্ড কর =

সারচার্জ =

মোট টাকা (অংকে) =

মোট টাকা (কথায়) =

ক্রম নম্বর

তারিখ

ব্যাংক ক্যাশিয়ারের স্বাক্ষর ও সীল

(ব্যাংকের সীল)

ব্যাংক কর্মকর্তার স্বাক্ষর ও সীল



Government of the People's Republic of Bangladesh
National Board of Revenue

Taxpayer's Identification Number (TIN) Certificate

TIN : 427928844204

This is to Certify that **GLOBAL WORLD LIMITED.** is a Registered Taxpayer of National Board of Revenue under the jurisdiction of **Taxes Circle-288 (Company)**, Taxes Zone 14, Dhaka.

Taxpayer's Particulars :

- 1) Name : **GLOBAL WORLD LIMITED.**
 - 2) Registered Address/Permanent Address : **HOUSE-34, ROAD-46, GULSHAN-2, DHAKA, PO: 1212.**
 - 3) Current Address : **HOUSE-34, ROAD-46, GULSHAN-2, DHAKA, PO: 1212.**
 - 4) Previous TIN : **0702020698**
 - 5) Status : **Company**
- Date : December 24, 2013

Please Note:

1. A Taxpayer is liable to file the Return of Income under section 75 of the Income Tax Ordinance, 1984.
2. Failure to file Return of Income under section 75 is liable to-
 - (a) Penalty under section 124; and
 - (b) Prosecution under section 164 of the Income Tax Ordinance, 1984.



Deputy Commissioner of Taxes
Taxes Circle-288 (Company)
Taxes Zone 14, Dhaka
Address : 12/1, At-Tarick Tower,
Bijoy Nagar, Dhaka Phone : 7115416

N. B: This is a system generated certificate and requires no manual signature.



Government of the People's Republic of Bangladesh
National Board of Revenue

Mushak-2.3

Customs, Excise and VAT Commissionerate, Dhaka (North)
Gulshan Division

Value Added Tax Registration Certificate

This is to certify that the person whose details are given below is registered under
Value Added Tax and Supplementary Duty Act, 2012 (Act No. 47 of 2012)

BIN : 000573449-0101

Name of the Entity	: GLOBAL WORLD LIMITED.
Trading Brand Name	: N/A
Old BIN	: 18131087720
e-TIN	: 427928844204
Address	: Plot # 34, Road # 46, Gulshan-2; Gulshan PS; Dhaka-1212; Bangladesh
Issue Date	: 20/10/2019
Effective Date	: 20/10/2019
Type of Ownership	: Private Limited
Major Area of Economic Activity	: Retail/Wholesale Trading, Imports, Exports, Supplier



This is a system generated certificate and doesn't require any signature

ইস্যু নং ৪৫৬৬
ট্যান্স, কোর্টফি ও
স্বাক্ষর নগদায়িত



Certificate of Incorporation

No.C-93296/11.....

I hereby certify thatGLOBAL.WORLD.LIMITED.....

.....
.....
is this day incorporated under the Companies Act (Act XVIII) of
1994 and that the Company is Limited.

Given under my hand at.....Dhaka.....
this.....Second.....day of.....June.....
two thousand.....Eleven.....

Deputy Registrar of Joint Stock Companies & Firms,

Bangladesh



অধিকারীকে নিম্নলিখিত
প্রত্যয়ন করা হল।

J.S.C.-34

B.G.P.-6583 Com(E)/2008-09—60,000 Copies. 2009.

(মোঃ সিরাজ উদ্দিন)
সহকারী রেজিস্ট্রার
রেজিস্ট্রারের কার্যালয়।
লেখক ও পঠক



Government of the People's Republic of Bangladesh
Office of the Chief Controller of Imports and Exports
Import Registration Certificate (IRC)
Commercial

IRC No:

260326110226519

This is to certify that until further orders **GLOBAL WORLD LIMITED**, Address: **Sheba House, Plot # 34, Road # 46, Gulshan-2, Dhaka-1212** is hereby registered as a **Commercial Importer** of Office of the Chief Controller of Imports and Exports under the jurisdiction of Office of the Controller of Imports and Exports, Dhaka with following terms and conditions.

Company's Particulars:

1. E-TIN : **427928844204**
2. Previous IRC No : **BA124604**
3. Nominated Bank Name & Branch : **South Bangla Agriculture and commerce Bank Ltd., Hasnabad**
4. Import Slab : **Up to 25,00,000 Taka**
5. First Issue Date : **05 September, 2016**
6. Valid up to : **30 June, 2022**
7. Last Updated Date : **13 January, 2022**

Terms & condition:

1. This Registration Certificate will have to be renewed every financial year.
2. Prohibited goods cannot be imported and in the case of controlled/restricted goods, all the terms and conditions of the import policy order should be maintained properly.
3. Without any permission of the Chief Controller of Imports & Exports or any other officer authorized by him, This Registration Certificate cannot be transferred.
4. If any Importer, Exporter & Indentor violates any provisions of the Importers, Exporters & Indentors (Registration) Order, 1981 or any other laws, the registration may be suspended or cancelled.
5. Any kind of fraud, forgery and misdeclaration is punishable under ICT Act, 2006 and in such cases the registration may be suspended or cancelled by the Authority.
6. The authority reserves the right to cancel the registration certificate at any time without assigning any reason whatsoever.



Roni Miah
Executive Officer
Office of the Controller of
Imports and Exports, Dhaka
National Sports Council
(NSC) Tower, 62/3,
Level-14, Purana Paltan,
Dhaka-1000.

N.B: This is a system generated certificate requires no manual signature.



**Government of the People's Republic of Bangladesh
Office of the Chief Controller of Imports and Exports
Export Registration Certificate (ERC)**

ERC No:

260326210325919

This is to certify that until further orders **GLOBAL WORLD LIMITED**, Address: **Plot # 34, Road # 46, Gulshan-2, Dhaka-1212** is hereby registered as an **Exporter of Office** of the Chief Controller of Imports and Exports under the jurisdiction of Office of the Controller of Imports and Exports, Dhaka with following terms and conditions.

Company's Particulars:

1. E-TIN : **427928844204**
2. Previous ERC No : **Ra-0104746**
3. Nominated Bank Name & Branch : **Bank Al-Falah Ltd, Gulshan**
4. First Issue Date : **04 December, 2012**
5. Valid up to : **30 June, 2022**
6. Last Updated Date : **12 October, 2021**

Terms & condition:

1. This Registration Certificate will have to be renewed every financial year.
2. Prohibited goods cannot be exported and in the case of controlled/restricted goods, all the terms and conditions of the export policy order should be maintained properly.



Masud Alam
Executive Officer
Office of the Controller of
Imports and Exports,
Dhaka
National Sports Council
(NSC) Tower, 62/3,
Level-14, Purana Paltan,
Dhaka-1000.

3. Without any permission of the Chief Controller of Imports & Exports or any other officer authorized by him, This Registration Certificate cannot be transferred.
4. If any Importer, Exporter & Indentor violates any provisions of the Importers, Exporters & Indentors (Registration) Order, 1981 or any other laws, the registration may be suspended or cancelled.
5. Any kind of fraud, forgery and misdeclaration is punishable under ICT Act, 2006 and in such cases the registration may be suspended or cancelled by the authority.
6. The authority reserves the right to cancel the registration certificate at any time without assigning any reason whatsoever.

N.B: This is a system generated certificate requires no manual signature.

Certificate of Membership



Bangladesh Tanners Association (BTA)

House # 88, Flat # A-1 Level-1, Road # 7/A, Dhanmondi, Dhaka-1209, Bangladesh, Tel: +88-02-48118860
Cell: +88-01703248923, E-mail: tanners@net2bd.com, Web: www.tannersbd.com

is pleased to certify GLOBAL WORLD LIMITED represented by
MD. SAKHAWAT HOSSAIN ; Managing Director, CHA-90/A, BTI Premier plaza, Label-03, Office No-26, Progoti Soroni, Uttar Badda, Dhaka-1212 who has been
enrolled as our honorable Associate member with membership no 680. is
engaged in production and export of leather.

We wish their every success.

Validity Date: 01st January, 2022 to 31st December, 2022

Date: 5th March, 2022

Ref: BTA/Membership Certificate/2022/126




Authorized Signature

Md. Shaheen Ahamed
Chairman
Bangladesh Tanners Association (BTA)

Book No: A-037

Serial No: BO 1123

BANGLADESH ORGANIC PRODUCTS MANUFACTURERS ASSOCIATION



AFFILIATION WITH THE BOPMA

WE ARE HONORED TO WELCOME

GLOBAL WORLD LIMITED

As a Member of the
BOPMA

This Membership shall remain valid upto 01st June 2022.
Given Under the Seal of this membership this 30th June 2020.

A handwritten signature in black ink, appearing to read 'Asalm', is written over a horizontal line.

PRESIDENT

A handwritten signature in black ink, appearing to read 'Jat', is written over a horizontal line.

SECRETARY GENERAL

Plot: 06 (4th floor), Road: 13, Nikunjo-2, Dhaka-1229, Bangladesh, Phone: +880255098241, 01734551526, Email: obl@organicbd.com

SL. No. 0681



Export Promotion Bureau

Enrolment Certificate

This is to certify that until further orders

Company Name : Global World Ltd.

Address : House No.34, Road No.46, Gulshan-02,
Dhaka,
Bangladesh.

Product Name : Rubber, Leather Goods, Organic Products, Stock Lot,
Pet Flax.

has been enrolled with the Export Promotion Bureau, Dhaka as
Non-Textile Products Manufacturer/Exporter and has been
allotted Enrolment Number.....NT-00833

01.07.2021

This certificate is valid for one year i. e. from.....
to.....30.06.2022... After expiry of validity, this certificate has to be
renewed.

29.12.2021
Issuing Date

Prepared by
Md. Amjad Hossain
UDA
Export Promotion Bureau
Dhaka.

Tania
Assistant Director/Deputy Director
Export Promotion Bureau

Tania Yasmin
Assistant Director
Export Promotion Bureau
Dhaka, Bangladesh